

User Guide: Film the Fault - SharePoint integration

Film the Fault is a system for fast and easy root cause analysis at highly automated production lines. SharePoint is a collaborative platform from Microsoft. This document describes how to configure the Film the Fault mobile app to automatically send videos of production faults to your SharePoint *site*. From there, you can either access the videos directly from a file explorer or use the Film the Fault SharePoint app to view your projects.

Please note: Depending on your organizations Microsoft security settings, you may need the help of an administrator to perform some of these steps the first time.

[Contact us](#) if you need help.

Prerequisites

If you follow this guide, it is assumed that:

- You have a Film the Fault hardware system including the SmartSensor to create events.
- You have access to a SharePoint to upload your projects to. This guide uses the online version of SharePoint.

Get started with Film the Fault: [link](#), [manual \(Swedish\)](#)

Get started with SharePoint: [link](#)

Contents

Prerequisites.....	1
Step 1: Get a SharePoint site to upload to	2
Step 2: Set up Film the Fault integration in the mobile app	3
Step 3: Set up the Film the Fault Project Viewer in SharePoint.....	7

Step 1: Get a SharePoint site to upload to

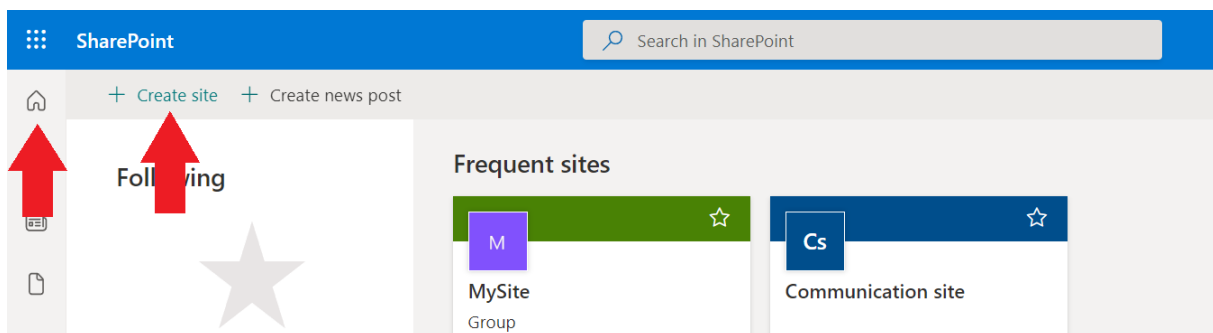
If your organization already has a SharePoint site for Film the Fault, you can skip this step.

Your organization's SharePoint (e.g. *myorganization.sharepoint.com*) can contain multiple different sites (e.g. *myorganization.sharepoint.com/sites/MySite*). Every site has a separate collection of documents, pages and users.

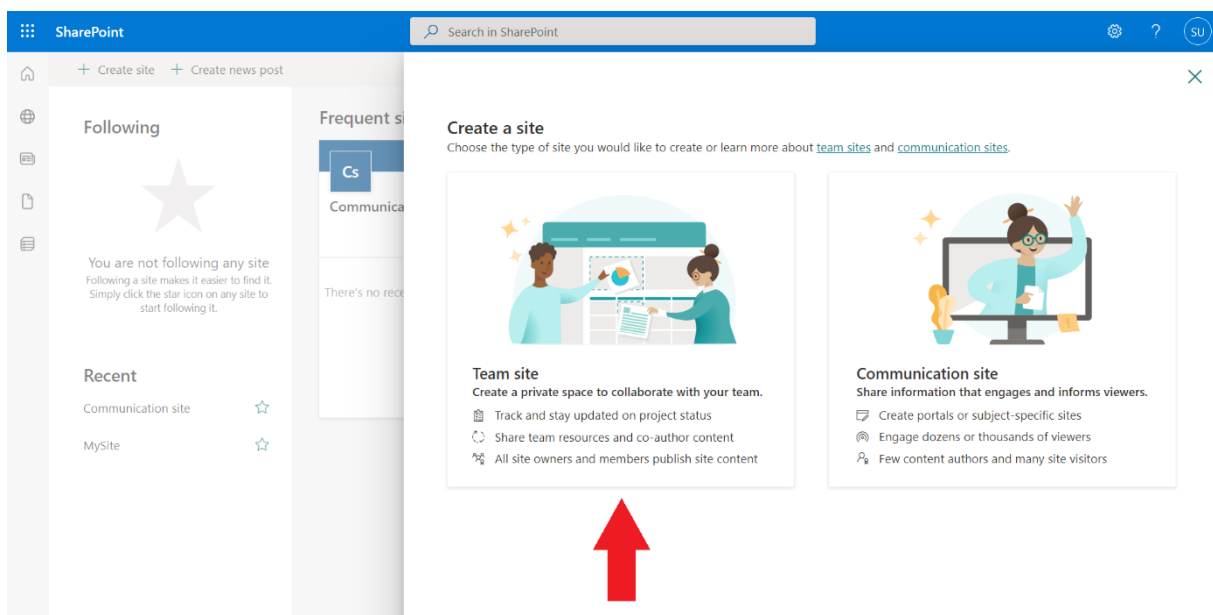
Your Film the Fault projects will be uploaded to the document library of a SharePoint site. All the users of this site will have access to each other's projects and pages. To share projects or videos with users outside the site you will have to send the specific files to them.

We recommend that you create a new SharePoint site for Film the Fault and add all the members of your organization that use the system.

1. Go to your organization's SharePoint start page (press the house icon in the left navigation bar or go to *myorganization.sharepoint.com/_layouts/15/sharepoint.aspx*)



2. Click "Create site" and proceed with the setup process. We recommend you create a *Team site* and add all colleagues that will use Film the Fault. In this guide, the site will be called MySite. You can call it "Film the Fault" or anything else.



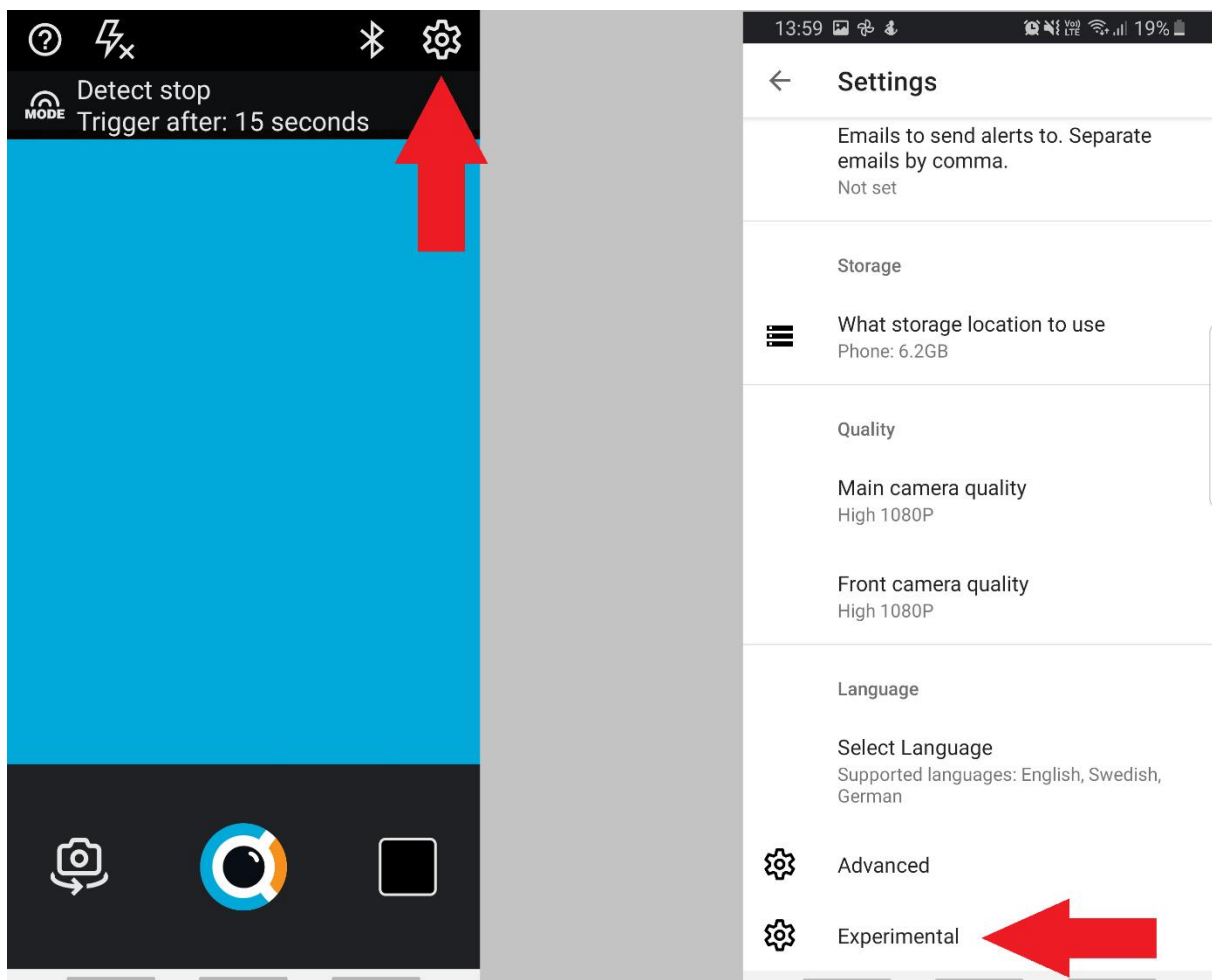
Step 2: Set up Film the Fault integration in the mobile app

These steps describe how to link the Film the Fault mobile app to your SharePoint. After completing them, any new events that are detected will automatically be uploaded to your SharePoint site as soon as they happen. The SharePoint integration must be set up independently for every mobile device.

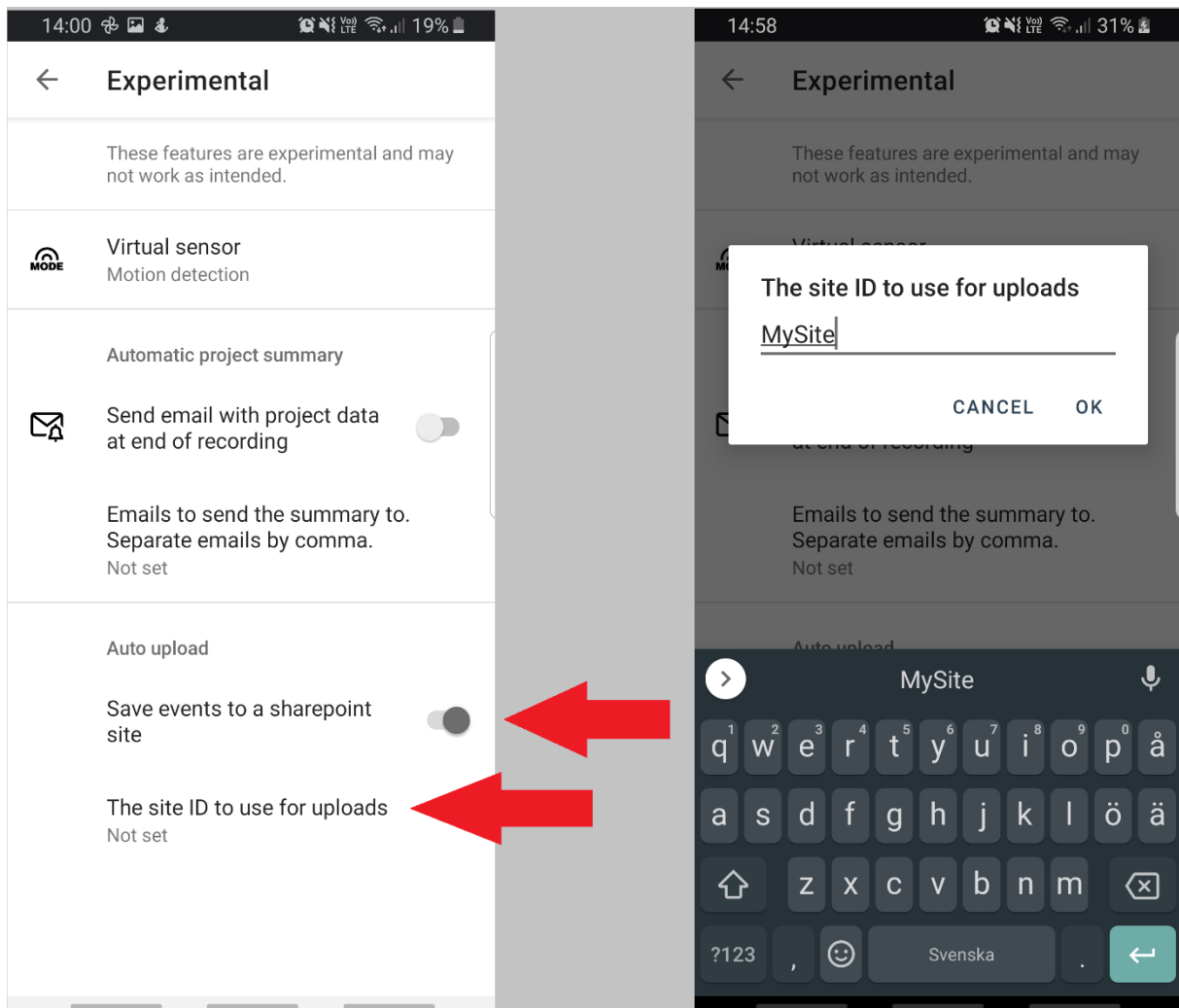
Please note:

- Right now, it is not possible to upload events or projects manually if they have already been recorded. Make sure to enable SharePoint integration before you start recording.
- If you just created a new SharePoint site you may need to wait a few hours for the site to be registered across all Microsoft services. In our experience, this takes about two hours.

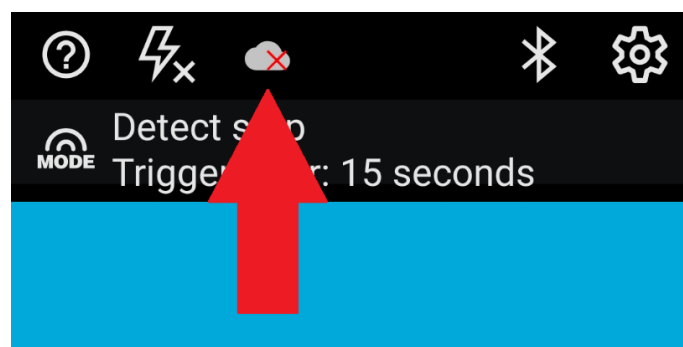
1. Open the Film the Fault app on the smartphone you use with the Film the Fault system and open the settings. Go to Experimental settings.



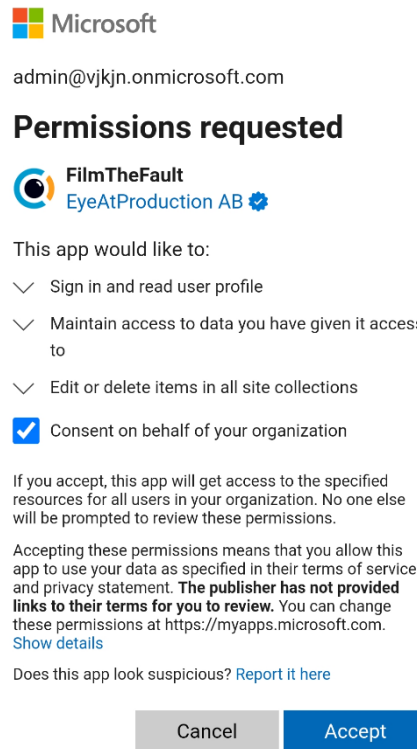
2. Enable “Save events to a sharepoint site” and enter the name of the SharePoint site you want to upload to. For example, if you want to upload to <https://myorganization.sharepoint.com/sites/MySite>, enter “MySite”.



3. Go back to the main menu and press the cloud icon to log in to Microsoft. The account you use must have access to the SharePoint site you want to upload to.

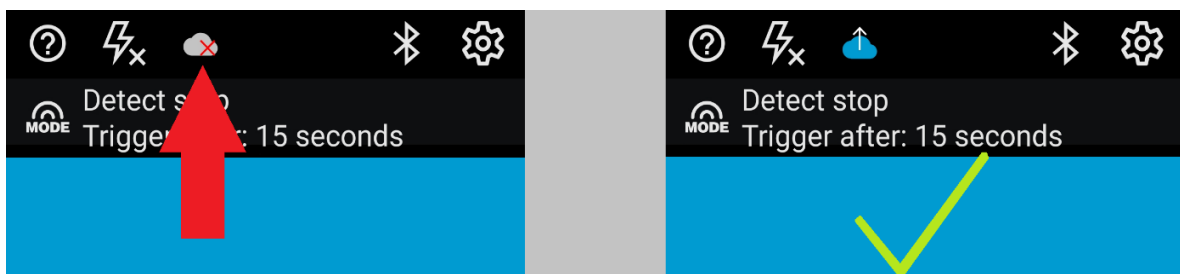


- The first time you log in Film the Fault will ask for the permissions needed to upload documents you your SharePoint site. You need to consent and click “Accept” for the SharePoint integration to work.



You may need to be an admin to grant permissions. In that case your organization’s Microsoft account administrator will need to log in to the Film the Fault app once. This can be done from another mobile unit. After that, any user of your organization should be able to log in with their own account.

- Look at the cloud icon to make sure that the login was successful.



If the site you connected to was created recently you may get an error saying “No sharepoint site found”. This is because it takes some time for the site creation to be registered across all Microsoft services. In this case, restart the app and try again in a few hours.

6. If there was no error, from now on any new events will be uploaded in the “Shared documents” on your SharePoint site. From there, you can browse and download videos of the events.

The screenshot shows a SharePoint interface for a site named 'MySite'. The top navigation bar includes the 'SharePoint' logo and a search box labeled 'Search this library'. On the left, a navigation pane lists various site sections: Home, Conversations, Documents (highlighted), Shared with us, Notebook, Pages, Site contents, Recycle bin, and Edit. The main content area displays a document library with the breadcrumb path 'Documents > FilmTheFault > Sample User'. At the top of the library, there are action buttons: '+ New', 'Upload', 'Edit in grid view', 'Share', and 'Copy link'. Below these, a table lists the contents of the library:

Name	Modified
PROJECT_2022-07-14_16-56-26_15	Yesterday at 7:57 AM

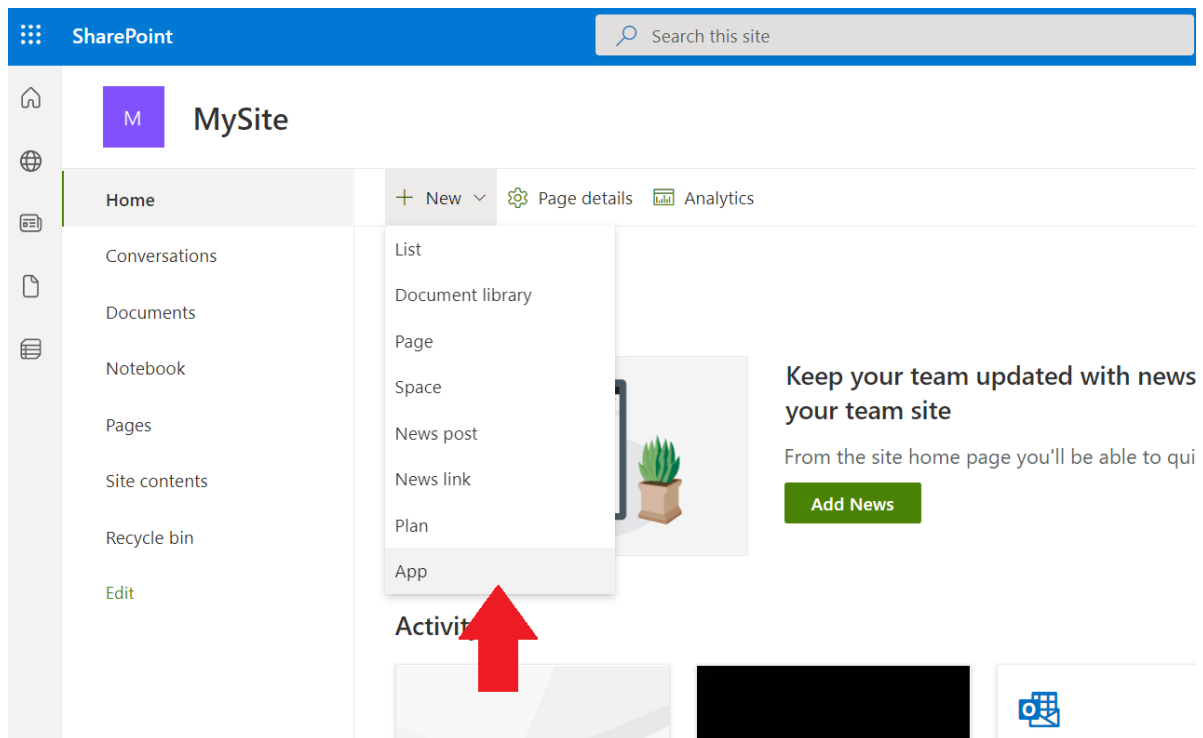
A large red arrow points to the folder entry in the table.

Step 3: Set up the Film the Fault Project Viewer in SharePoint

To navigate, view and share your Film the Fault projects more easily, add the Film the Fault SharePoint app to one of your SharePoint pages. The app will give you an interface like the mobile app project view on your SharePoint site.

The SharePoint app only needs to be set up once per SharePoint site and must be done by a site owner. If this has already been done, you can skip this section.

1. Go to the homepage of the SharePoint site where your Film the Fault projects are stored (e.g. <https://myorganization.sharepoint.com/sites/MySite>) and click New > App.



2. Locate the "Film the Fault" app in the App Store. If an admin has added the app to your organization's app collection, it should be visible under "Apps you can add". In that case, click "Add" to add the app to your site.

SharePoint apps **My apps** SharePoint Store My requests

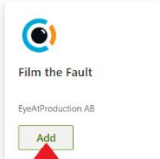
← Back to MySite

My apps

Filter **Apps you can add** Sort by: Newest

All
From my organization
From SharePoint Store

These are SharePoint Store or custom apps allowed by your organization. Built-in apps such as Custom List, Document Library, Calendar and others can be found in the classic experience.



Film the Fault
EyeAPProduction AB

Add

Find more apps in
SharePoint Store

→

Added apps
No apps have been added yet.

If the app is not visible under “Apps you can add”, it will have to be added from the SharePoint Store. Go to the SharePoint store to check if you have access to add new apps.

SharePoint apps **My apps** **SharePoint Store** My requests

← Back to MySite

My apps

Filter **Apps you can add** Sort by: Newest

All
From my organization
From SharePoint Store

There are no SharePoint Store or custom apps allowed by your organization right now. If you're looking for built-in apps such as Custom List, Document Library, Calendar and others, you can check for them in the classic experience.

[Find more apps in the SharePoint Store.](#) →

Search for “Film the Fault” and click on apps card.

SharePoint apps My apps **SharePoint Store** My requests

← Back to SharePoint Store home

240 results found for "Film the Fault"

Categories **All** Sort by: Most relevant

- Best Apps of the Year
- Business
- Clocks & Calendars
- Communication
- Content Management
- CRM

Film the Fault
EyeAPProduction AB

Save time and troubleshoot automated manufacturing with a film ...

PDFfiller - fill your documents
PDFfiller

Export your documents to PDFfiller in few clicks.

★★★★★ (1)

fileTrooper SharePoint File Explorer
ROOTFUSION

fileTrooper is a SharePoint file explorer to browse Document Libraries and...

★★★★★ (2)

In-Browser File Editor
CCGrove Solutions

Edit CSS, HTML, and JavaScript files in-browser from your document...

★★★★☆ (4)

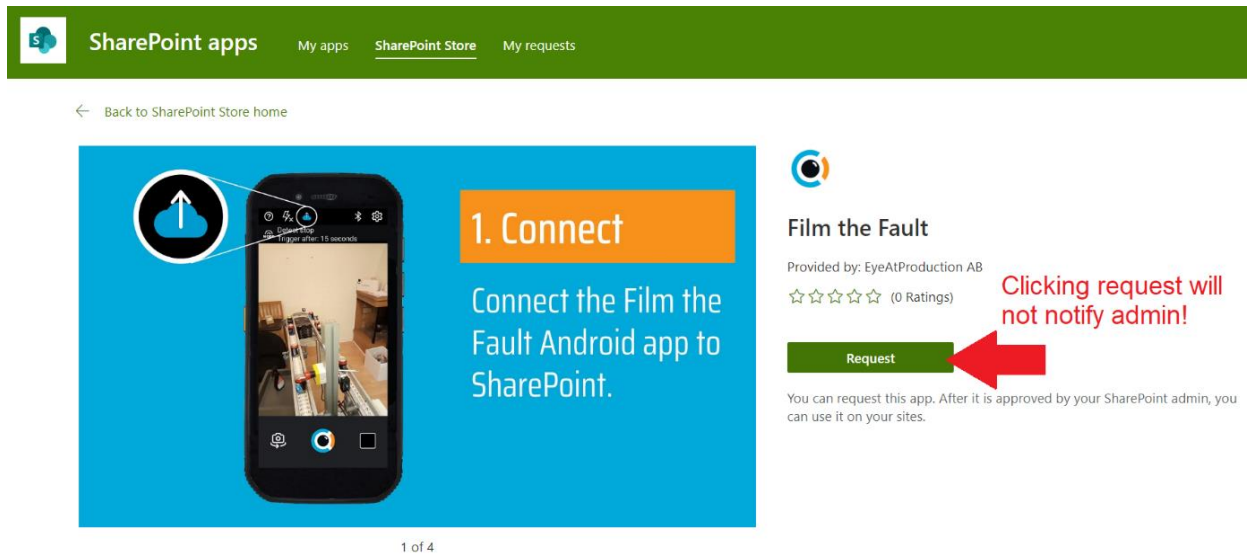
Word to Wiki Online (Lite)
Kaboodle Software

Convert Word documents to SharePoint wiki pages at the click of a button

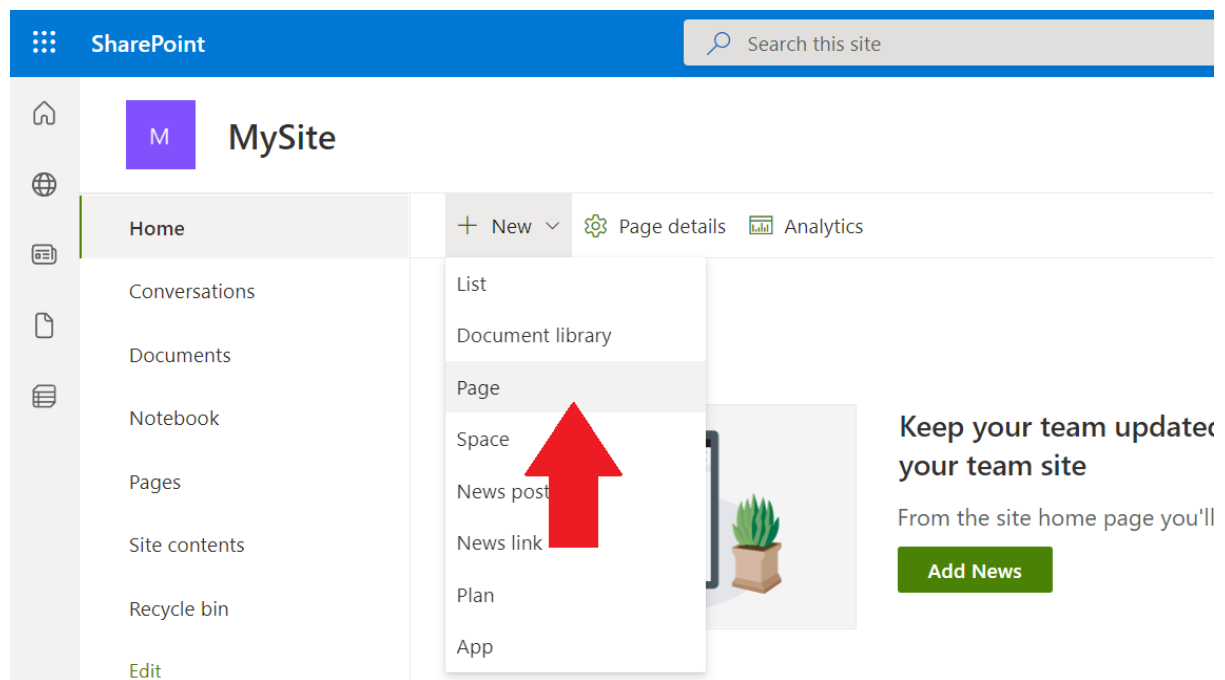
★★★★☆ (9)

If there is an option to add the app, do that. If instead there is an option to “Request” the app, you will need help from an admin of your organization’s Microsoft account to add the app.

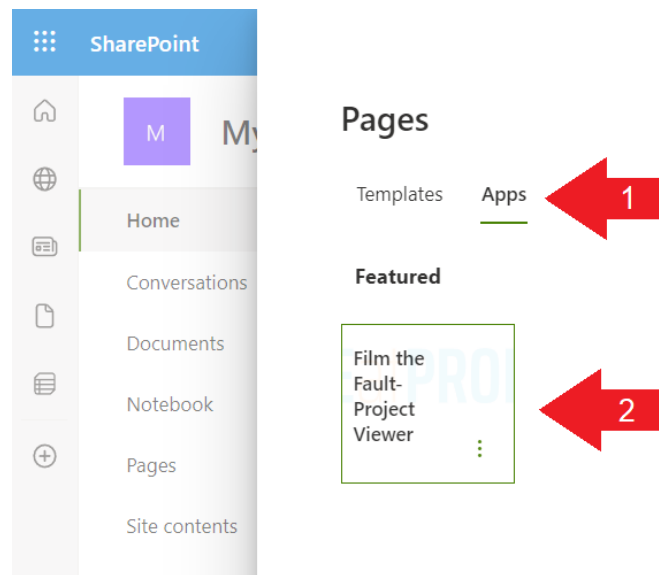
Please note: In our experience, pressing “Request” will not notify the admin, which means that your request most likely will never be approved. Instead of requesting through the SharePoint Store, we recommend that you contact the admin by email.



3. When you have added the app to your site, go back to your site to add the app to a page. If you want, you can add it to an existing page as a WebPart. However, we recommend that you create a full-page app. To do that, first create a new page.



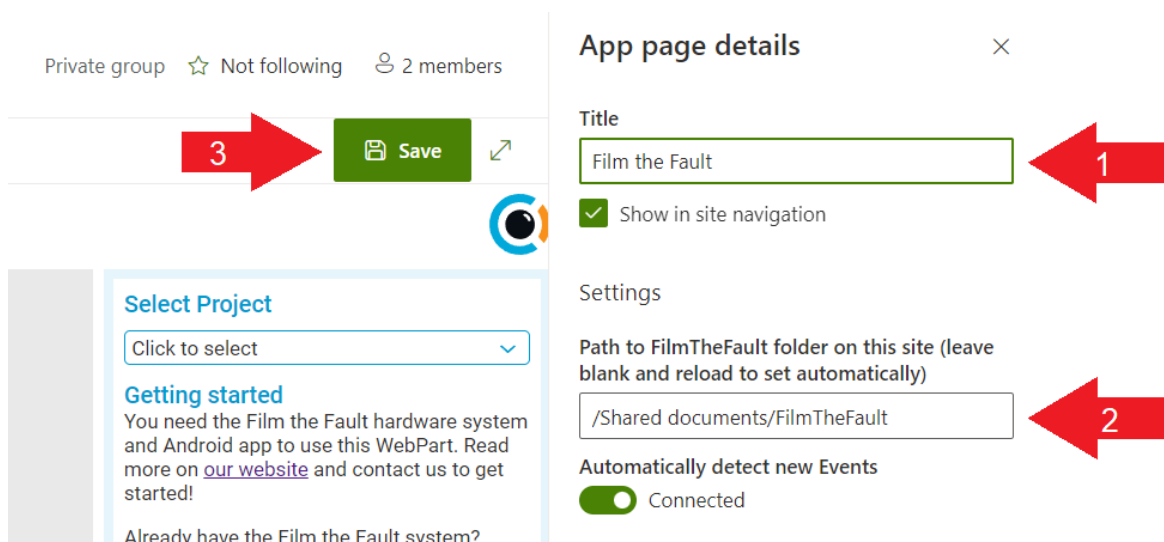
4. In the page setup panel, go to the “Apps” Tab and select “Film the Fault- Project Viewer”.



5. Enter the page Title you want to use (for example “Film the Fault”). If you have exported projects from the mobile app to the site, “Path to FilmTheFault folder” should be set automatically. If you have projects on the site but the field is still blank, enter the path manually (it depends on the language of the site). Example:

For English sites, enter: **/Shared documents/FilmTheFault**

For Swedish sites, enter: **/Delade dokument/FilmTheFault**



That is it! You should now be able to locate the projects uploaded to your SharePoint site in the dropdown menu and view videos of the events.

Please [Contact us](#) if you require further assistance.